

## Fitting your Twin Sliding Window Screen - Kit 0611 - 0653

Thanks for choosing our screen system.

We double check all orders before despatch, but we would ask you to check that all the components have been received as listed below. If any items are missing please call us on 01628 481919

**If you are unsure at any stage please contact us. We are always happy to help.**

### Kit Contents

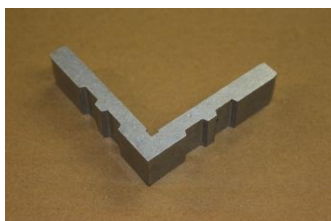
2 Screens

Twin track:

4 lengths with  
corner holes drilled



Track corners x 4



Tool kit:  
3.5mm drill bit  
8mm drill bit  
Posidrive 2  
Allen key



Track fixings

Screws  
No 6 1"



Track fixings

8mm cover caps  
and matching no.  
of rawl plugs



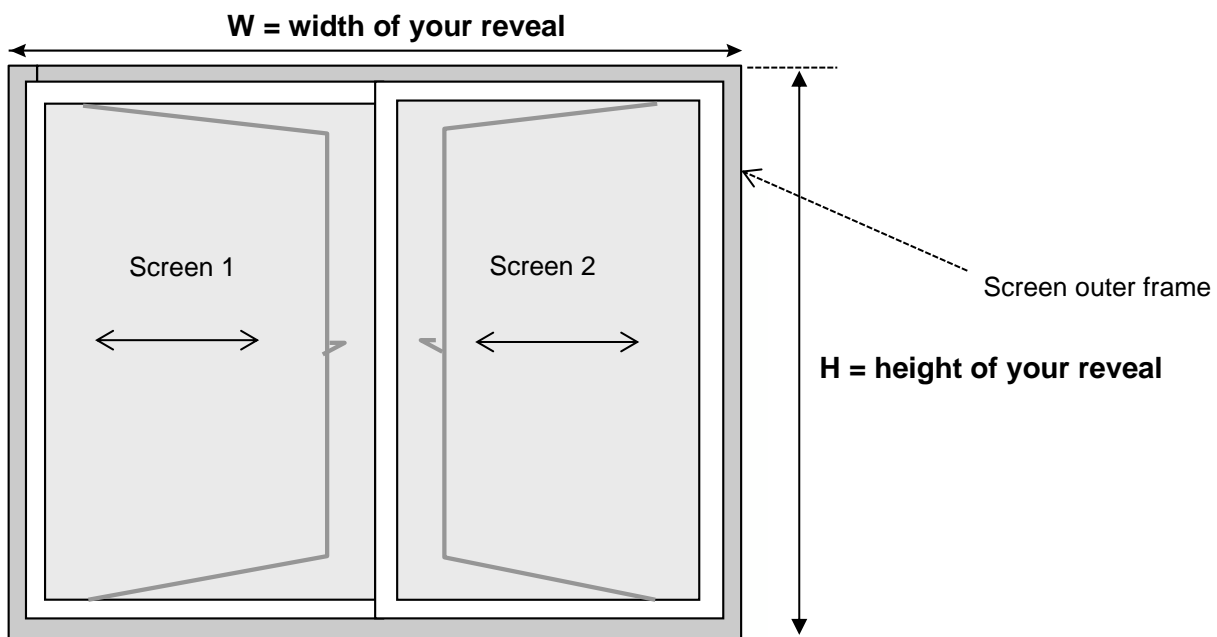
## Tools required

- Tape measure & pencil
- Spirit level
- Manual or power drill
- Drill bits – suitable for drilling aluminium – (**provided**)
- Pozidrive 2 screw driver bit (**provided**)
- Allen key 2.5mm (**provided**)

## Overview

Your screen system consists of two sliding screens which fit into an outer frame. The screens slide past each other and overlap in the middle to ensure a seal. The outer frame can be either reveal fitted to the reveal walls or face fitted to the window frame.

We have made your screen as per the dimensions below:

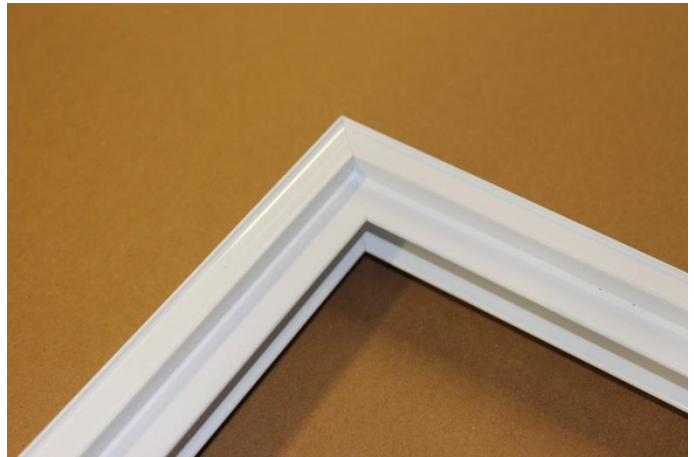
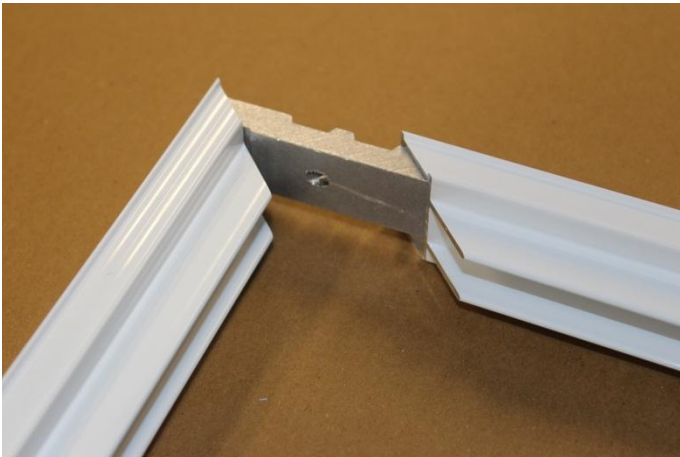
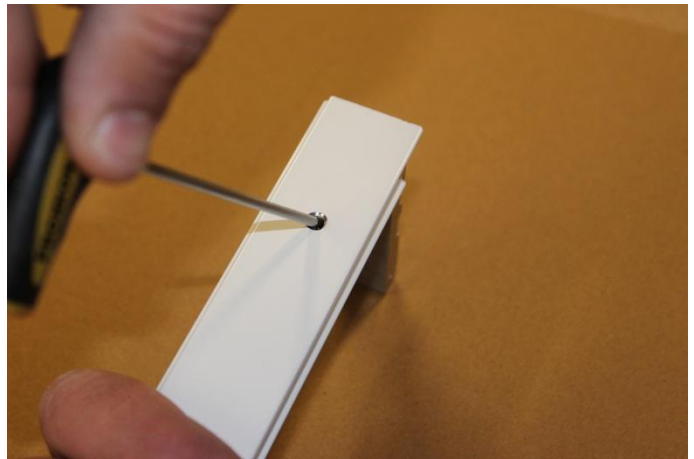
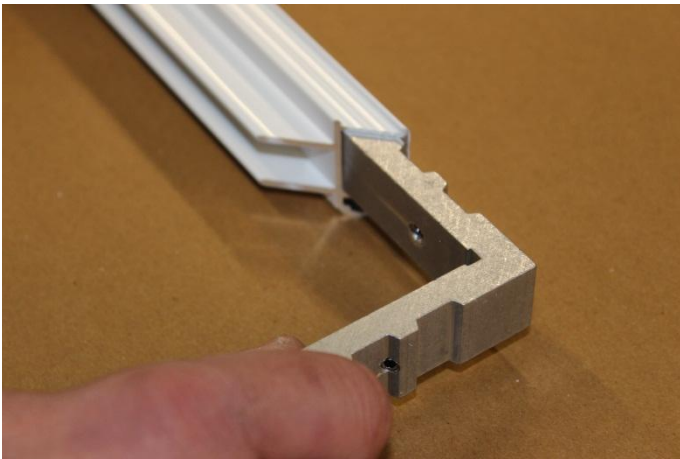


## Step 1 – Assembling the tracks/outer frame.

The first step is to assemble the outer twin track which is made from two vertical lengths and two horizontal lengths joined together with the 4 track corner inserts.

- Insert the corners into the track ends and draw the lengths together to form the outer frame. Work round each corner, pulling the corner together at the tips then tightening the grub screws with the Allen key as shown below.

**Note:** If the corner does not slide in easily use a mallet to tap it in.

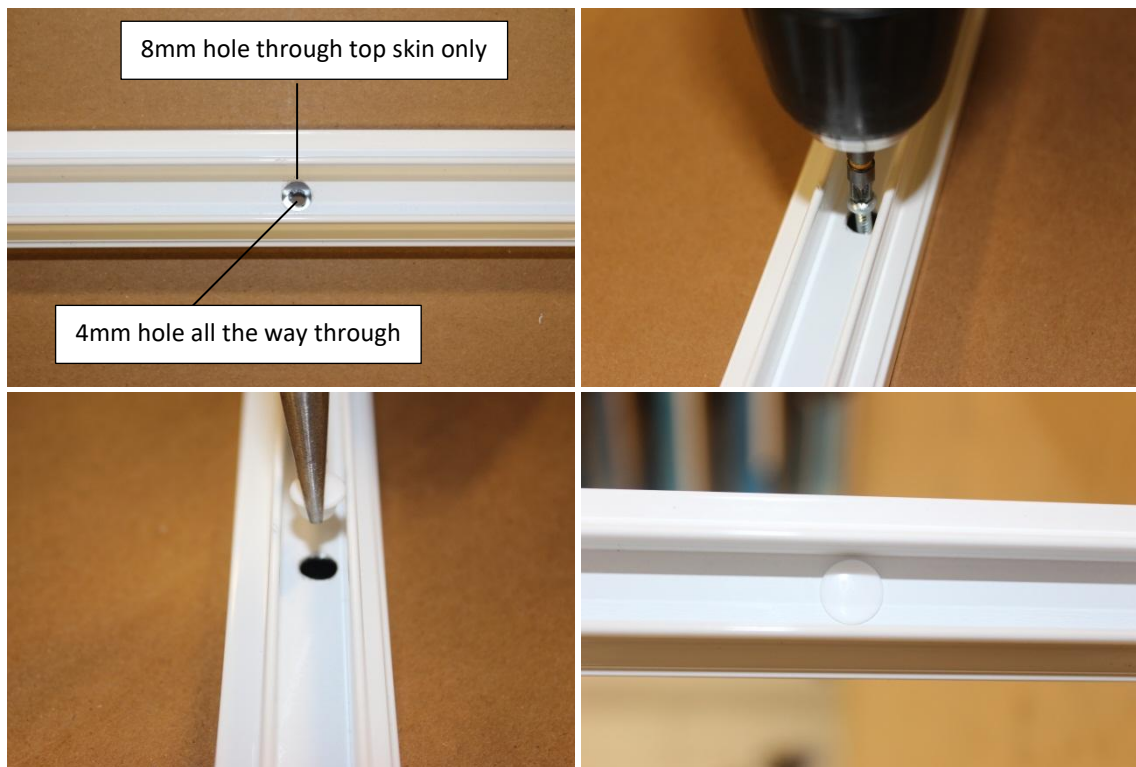


## Step 2 – Fixing the tracks/outer frame.

Fit the tracks/outer frame in place with 4 screws along each length, two about 100mm in from each corner and the other two equidistant along the length. **Ensure the face with the two ridges faces inwards i.e. towards your window and that the whole frame is square.**

- Use the 3.5mm bit to drill a hole right through the channel
- use the 8mm bit to drill a hole through the first skin only
- Fix using the 1" screws (use Rawl plugs if necessary)
- Cap the hole with the 8mm cap supplied

**Note:** If your reveal is not square first fit the track/outer frame at the bottom, ensuring the track is level. The key is to keep the track/frame true rather than trying to 'mould' it to the shape of the reveal. Secure fixings where the track naturally touches the reveal walls and use packing where necessary to keep the track/outer frame true. Once fitted seal any gaps with acrylic sealer.



### Step 3 – Fitting the screens

- Position the left-hand screen (the one without the pile to the back) with the spline/channel facing your window and the wheels at the bottom.
- Insert the top of the screen onto the top back lip of the upper track and lift upwards until there is enough clearance to rest the bottom of the screen on the back lip of the bottom track.
- Let the screen rest on the bottom track and test to ensure it rolls smoothly.
- 2 Screen clips are positioned in the channel on either side of the screen. Push the top clip up so it locates onto the top track, insert and tighten the grub screws. See image below



- Repeat for the bottom clips on to the bottom track.
- Check again to ensure the screen rolls smoothly.
- Repeat for the right-hand screen (the one with the pile to the back) but locate on the front lip of the track.
- Slide the left-hand screen across to the left as far as it will go and the right-hand screen to the right. The screens should overlap in the middle by 58mm (the same width of the screen frame) with the brush pile creating the seal between the two.

**YOUR INSTALLATION IS COMPLETE**